



QUALITY • PERFORMANCE • RELIABILITY



# ***CTM-WI-CF-50***

**C-Frame 50 Ton Wax Injection Machine**

4717 Hinckley Industrial Parkway, Cleveland, Ohio 44109



**QUALITY • PERFORMANCE • RELIABILITY**



## STANDARD FEATURES

### INJECTION SYSTEM

- + Our in-line injection system allows the material to be injected in a smooth straight line from the injection chamber through our unique nozzle design and into the die. This insures a smooth laminar flow that prevents turbulence.
- + Select from three injection control systems suited to the user's needs. All systems contain excellent temperature, pressure, and flow control.
- + Automatic purge of material after each cycle.
- + Automatic material charge between cycles.
- + 5 zones of temperature control.

### PRESS

- + Available with work table or shuttle table
- + T-Slots on bottom and moving platen
- + Low oil level alarm/shutdown
- + High temperature alarm/shutdown
- + Ultra quiet pumping system
- + Independent platen cooling

### OPERATOR

- + All functions on easy-to-use touch screen interface in user's language
- + Reduced operator fatigue due to ergonomic controls
- + Built to NFPA, ANSI, OSHA, & CE safety standards

### WARRANTY

- + All machines have a full 1 year warranty on all materials and workmanship

*CTM C FRAME WAX INJECTION MACHINES ARE DESIGNED TO PRODUCE THE HIGHEST QUALITY PATTERNS*



**C- Frame 50 Ton Wax Injector**

**ABOVE: CTM WICF-50, 50 Ton Wax Injector**  
Features: Advanced controls, safety light guarding, paste wax, wax loader & more

ALL MACHINES ARE AVAILABLE WITH CE SAFETY SYSTEMS FOR EU COUNTRIES

**NOW INCLUDES REMOTE ACCESS!**

**ASK ABOUT OUR AVAILABLE OPTIONS TO ENHANCE YOUR MACHINE!**

## Contact Us Today!

Email: [sales@clevtool.com](mailto:sales@clevtool.com)

Website: [www.clevtool.com](http://www.clevtool.com)

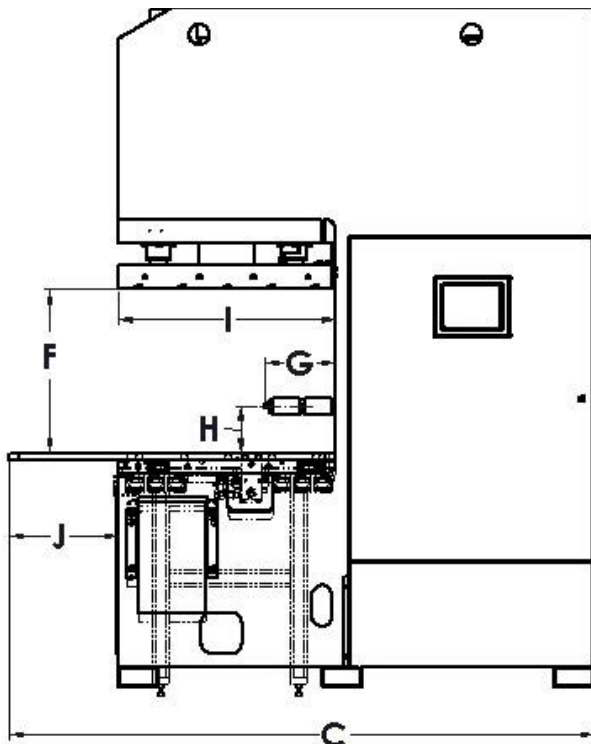
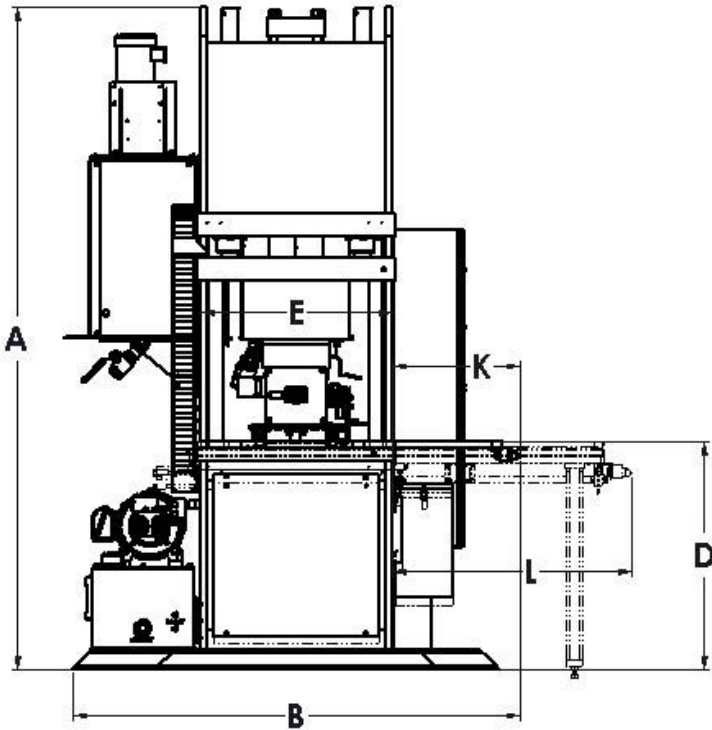
Tel: (216) 267-6010

Fax: (216) 267-6011



# CTM-WI-CF

## C-Frame 50 Ton Wax Injection Machine



### CTM-WI-CF 50 Ton Specifications

	Imperial	Metric
Clamp Force (Tons)	50 Tons	45.4 Tonnes
Press Closing Speed	2 in/sec	50.8 mm/sec
Press Opening Speed	2 in/sec	50.8 mm/sec
Die Mounting	1/2 (12.7 mm) in T-Slots	
Water Cooled Platens	Included	
Material Holding Tank Capacity	30 Gal	114 Liter
Shot Size	346 cu. in	5.6 Liter
Injection Pressure	0-800 PSI	0-55 BAR
Injection Flow Rate Maximum	15 cu. in/sec	245 cc/sec
Injection Cycle Time	0-999 sec.	
Nozzle Tip Size	3/8 in radius	9.5 mm radius
Heating System	120 volt- 5 zones	
Hydraulic System Pressure	2600 PSI	179 BAR
Hydraulic Pump Type	Pressure Compensated	
Hydraulic Reservoir Capacity	30 Gal	114 Liter
Hydraulic Cooling System	Water Cooled	
Minimum Cooling Water Flow	3 GPM	11 LPM
Maximum Cooling Water Temp	80°F	27°C
Cooling Water Connection	1/2 in NPT	
Standard Electric	460V 3Ph 60 HZ 30 @	
Air Pressure (If Required)	60-80 PSI	4.1-5.5 BAR
Approximate Weight	9500 Lbs	4318 Kgs
A.) Height	101 in	2565 mm
B.) Width	66.75 in	1695 mm
C.) Depth	106 in	2692 mm
D.) Floor to Table	35.5 in	902 mm
E.) Work Area Width	30 in	762 mm
F.) Press Open	3-24 in	77-609 mm
G.) Nozzle In/Out	0-8.5 in	0-216 mm
H.) Nozzle Up/Down	2-9.5 in	50.8-241.3 mm
I.) Work Area Depth	32 in	812.8 mm
I+J.) Work Table Depth	48 in	1219 mm
E+K.) Work Table Width	46 in	1168 mm

\*Pictured Dual Wax Tank Optional

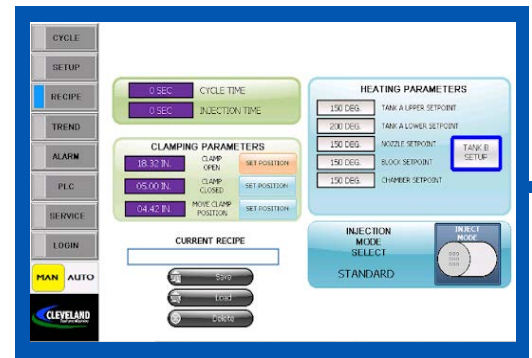
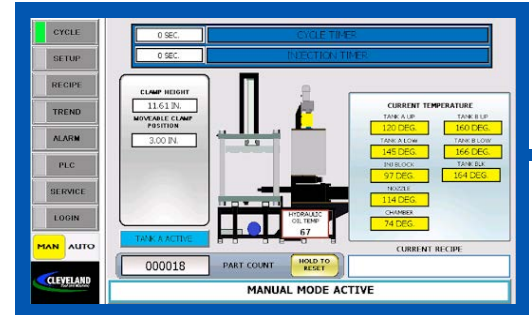


QUALITY • PERFORMANCE • RELIABILITY



## AVAILABLE OPTIONS

- + Electronic Injection Control System
- + Extra Large Color Touch Screen
- + Swing Arm/Pedestal for HMI
- + Data Storage
- + Bar Code Scanner
- + Platen Temperature Control- For heating and cooling
- + PLC Remote Connection
- + Die Transfer Shuttle Table- To move die in and out of press area
- + Dual Quick Change wax tanks
- + Increased capacity wax tanks
- + Increased capacity injection shot sizes
- + Paste wax injection
- + Removable Holding Tanks
- + Safety Light Curtains
- + Wax Melter- Melts directly into wax reservoir and includes level control (Different sizes available)
- + Wax Bead Autoloader with level control
- + Bottom Injection
- + Pattern Ejection System- Bottom centerline
- + Crane and Hoist
- + Core Pull
- + Remote Injection Nozzle
- + Operator Work Light
- + Water Filtration
- + Temperature Calibration Test Ports
- + Operator Air Gun
- + Magnetic Platens
- + Quick Die Clamping
- + Dual Operator Stations
- + Function/Status Light Towers



# Contact Us Today!

Email: [sales@clevtool.com](mailto:sales@clevtool.com)  
 Website: [www.clevtool.com](http://www.clevtool.com)



Tel: (216) 267-6010  
 Fax: (216) 267-6011