



QUALITY • PERFORMANCE • RELIABILITY



CTM-WI-CF

C-Frame 25 Ton Wax Injection Machine

4717 Hinckley Industrial Parkway, Cleveland, Ohio 44109



QUALITY • PERFORMANCE • RELIABILITY



STANDARD FEATURES

INJECTION SYSTEM

- + Our in-line injection system allows the material to be injected in a smooth straight line from the injection chamber through our unique nozzle design and into the die. This insures a smooth laminar flow that prevents turbulence.
- + Select from three injection control systems suited to the user's needs. All systems contain excellent temperature, pressure, and flow control.
- + Automatic purge of material after each cycle.
- + Automatic material charge between cycles.
- + 5 zones of temperature control.

PRESS

- + Available with work table or shuttle table
- + T-Slots on bottom and moving platen
- + Low oil level alarm/shutdown
- + High temperature alarm/shutdown
- + Ultra quiet pumping system
- + Independent platen cooling

OPERATOR

- + All functions on easy-to-use touch screen interface in user's language
- + Reduced operator fatigue due to ergonomic controls
- + Built to NFPA, ANSI, OSHA, & CE safety standards

WARRANTY

- + All machines have a full 1 year warranty on all materials and workmanship

CTM C FRAME WAX INJECTION MACHINES ARE DESIGNED TO PRODUCE THE HIGHEST QUALITY PATTERNS



C- Frame 25 Ton Wax Injector

ABOVE: CTM WICF 25t, 25 Ton Wax Injector

Features: Advanced controls, safety light guarding, paste wax, wax loader & more

ALL MACHINES ARE AVAILABLE WITH CE SAFETY SYSTEMS FOR EU COUNTRIES

NOW INCLUDES REMOTE ACCESS!

ASK ABOUT OUR AVAILABLE OPTIONS TO ENHANCE YOUR MACHINE!

Contact Us Today!

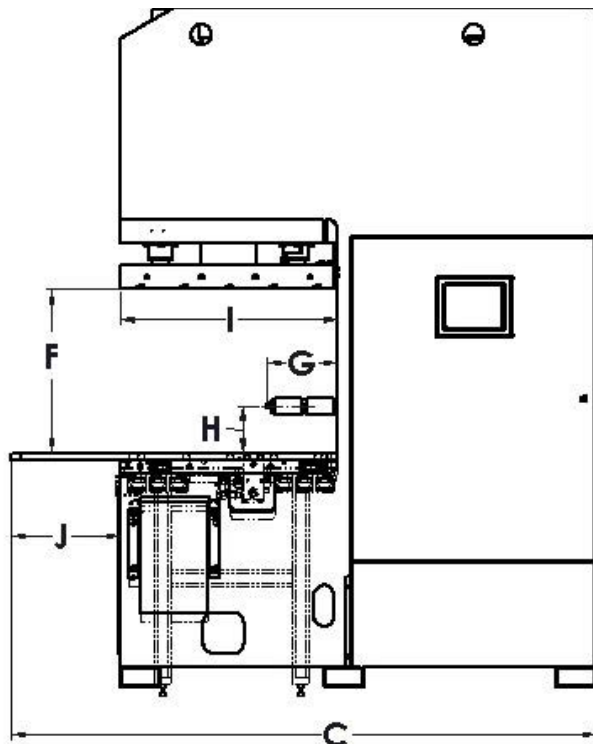
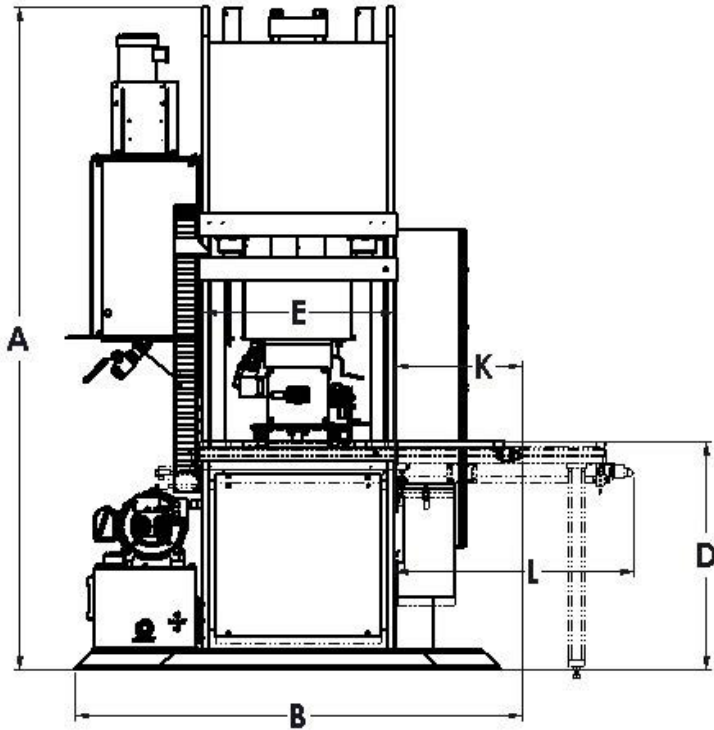
Email: sales@clevtool.com
Website: www.clevtool.com

Tel: (216) 267-6010
Fax: (216) 267-6011



CTM-WI-CF

C-Frame 25 Ton Wax Injection Machine



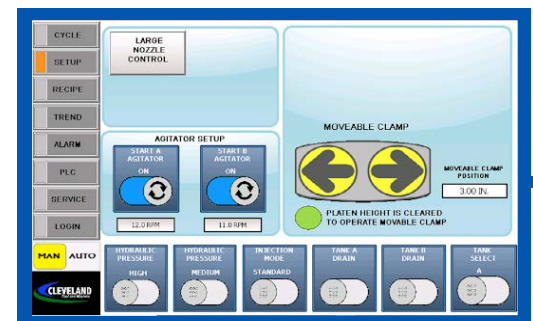
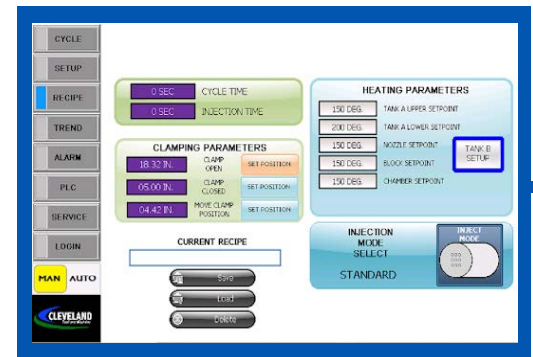
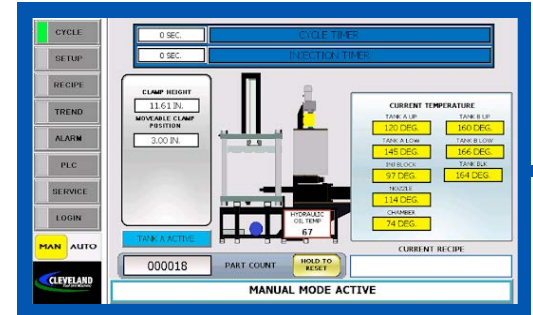
*Pictured Dual Wax Tank Optional

CTM-WI-CF 25 Ton Specifications

	Imperial	Metric
Clamp Force (Tons)	25 Tons	22.7 Tons
Press Closing Speed	2 in./sec	50.8 mm/sec
Press Opening Speed	2 in./sec	50.8 mm/sec
Die Mounting	1/2 in T-Slots	
Water Cooled Platens	Included	
Material Holding Tank Capacity	15 Gallons	57 Liters
Shot Size	100 cu. in	1.6 Liters
Injection Pressure	0-850 PSI	0-58 BAR
Injection Flow Rate Maximum	15 cu. in/sec	245 cc/sec
Injection Cycle Time	0-999 sec.	
Nozzle Tip Size	3/8 in. radius	9.5 mm radius
Heating System	120 volt- 4+ zones	
Hydraulic System Pressure	2600 PSI	179 BAR
Hydraulic Pump Type	Pressure Compensated	
Hydraulic Reservoir Capacity	15 Gallons	57 Liters
Hydraulic Cooling System	Water Cooled	
Minimum Cooling Water Flow	3 GPM	11 LPM
Maximum Cooling Water Temp	80°F	27°C
Cooling Water Connection	1/2 inch NPT	
Standard Electric	460V 3Ph 60 HZ 30 @	
Air Pressure (If Required)	60-80 PSI	4.1-5.5 BAR
Approximate Weight	5500 Lbs	2495 Kgs
A.) Height	97 in	2464 mm
B.) Width	59 in	1499 mm
C.) Depth	92 in	2337 mm
D.) Floor to Table	35.5 in	902 mm
E.) Work Area Width	24 in	609 mm
F.) Press Open	3-20 in	77-508 mm
G.) Nozzle In/Out	0-8.5 in	0-216 mm
H.) Nozzle Up/Down	2-9.5 in	50.8-241.3 mm
I.) Work Area Depth	20 in	508 mm
I+J.) Work Table Depth	35 in	889 mm
E+K.) Work Table Width	38.5 in	978 mm

AVAILABLE OPTIONS

- + Electronic Injection Control System
- + Extra Large Color Touch Screen
- + Swing Arm/Pedestal for HMI
- + Data Storage
- + Bar Code Scanner
- + Platen Temperature Control- For heating and cooling
- + PLC Remote Connection
- + Die Transfer Shuttle Table- To move die in and out of press area
- + Dual Quick Change wax tanks
- + Increased capacity wax tanks
- + Increased capacity injection shot sizes
- + Paste wax injection
- + Removable Holding Tanks
- + Safety Light Curtains
- + Wax Melter- Melts directly into wax reservoir and includes level control (Different sizes available)
- + Wax Bead Autoloader with level control
- + Bottom Injection
- + Pattern Ejection System- Bottom centerline
- + Crane and Hoist
- + Core Pull
- + Remote Injection Nozzle
- + Operator Work Light
- + Water Filtration
- + Temperature Callibration Test Ports
- + Operator Air Gun
- + Magnetic Platens
- + Quick Die Clamping
- + Dual Operator Stations
- + Function/Status Light Towers



Contact Us Today!

Email: sales@clevtool.com
 Website: www.clevtool.com

Tel: (216) 267-6010
 Fax: (216) 267-6011

